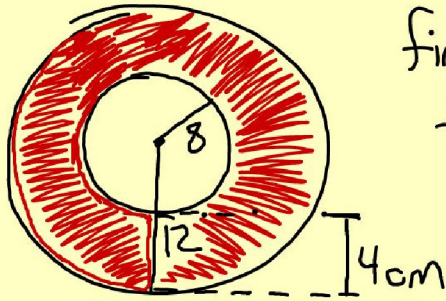


Honors Warm Up



find the area of the red region.

Standard Tools
Math
Vote Tool
Literacy
Geography
Settings
WizTeach Share



What do these mean?

rate = divide
ratio = divide
sum = add
total add
more add
less subtract
times multiply
of multiply

difference subtract
farther add or subtract
All add
split evenly divide or multiply
change subtract
~~Before~~ <
per divide

