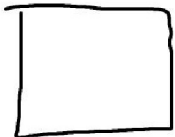
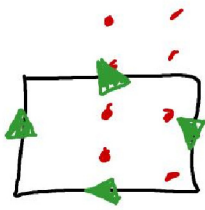


# Faraday law WS

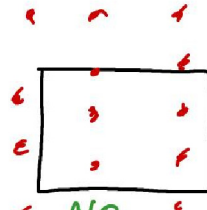
④



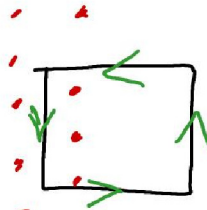
No I



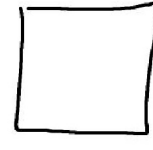
CW



No current  
 $\Delta\Phi = 0$



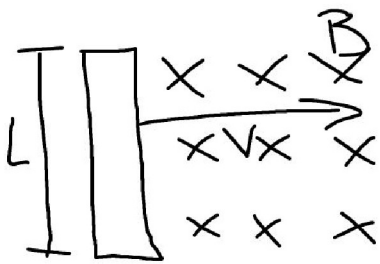
CCW



None

$$\text{Induced EMF} = \mathcal{E} = \frac{\Delta\Phi}{\Delta t} = \frac{\Delta(BA)}{\Delta t}$$

$$= \frac{(\Delta B)Lw}{\Delta t}$$



$$\mathcal{E} = BLv$$

In a bar